

# UTILATWIN® LAUNDRY TUB

## MODELS: 22, 22K, 24 & 24K

### INSTALLATION INSTRUCTIONS



**NOTE:** Read instructions completely before attempting to assemble your new laundry tub. All holes are pre-punched, the only tools needed are a screwdriver and adjustable wrench.

1. Set tubs up-side down on a clean smooth surface. Before assembling any parts, make sure the faucet holes are side by side. Assemble metal braces (one required front and back) onto the tub skirts with the four (4) #10 x 1/2" slotted tapping screws and four (4) #10 flat nuts.

2. Determine which tub you want your twin drain **outlet** connected to, illustration shows left hand. Place a flanged washer on each tub drain outlet. Position twin drain assembly on washers, screw 1 1/2" slipnuts onto threaded drain outlets.

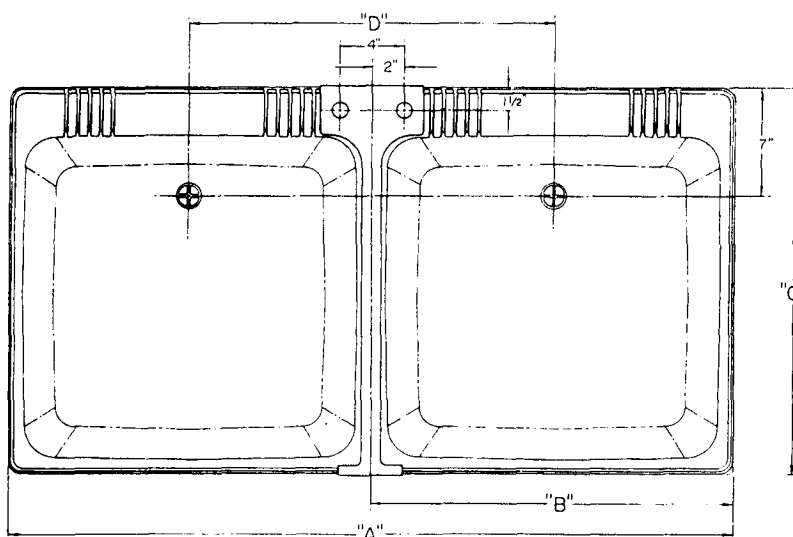
**CAUTION:** DO NOT USE ANY PUTTY OR THREAD SEALING COMPOUND ON THREADS - FAILURE AND LEAKAGE MAY RESULT! TEFLON TAPE MAY BE USED. DO NOT OVERTIGHTEN SLIPNUTS - HAND TIGHTEN THEN WRENCH AN ADDITIONAL 1/2 TURN - MAXIMUM.

3. Insert legs into corner sockets of tubs using a firm pressure. You may tap legs in place with a hammer as long as you protect the bottom of the leg with a block of wood or similar pad. Assemble 1/4" - 20 x 1 1/2" leveling screws and nuts to each leg. Check "RECOMMENDED METHOD OF LEVELING & ANCHORING" on back.

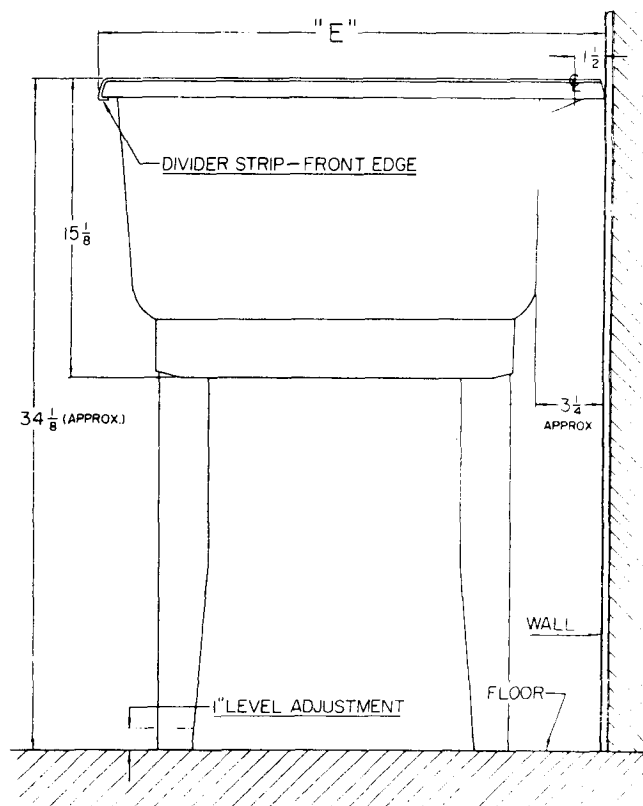
4. Set tubs right side up. Position divider strip between the two tubs, (see PARTS ILLUSTRATION) hook the front edge of the divider under the front rim of each tub, hold front of divider in place with one hand and press downward with the other hand to snap in place. Install 4" center set faucet to hold down rear of divider strip.

5. Position laundry tub in desired location, re-check level. Connect water supply to bottom feed faucet (optional faucet block P/N 20. 600 available if top feed faucet is used). Make waste connection to 1 1/2" tailpiece in full compliance with local code regulations.

## ROUGH-IN DIMENSIONS



DIMENSION:					
MODEL NO.	A	B	C	D	E
22 (22K)	36"	18"	23 1/2"	18"	23 5/8"
24 (24K)	46"	23"	25"	23"	25 1/8"



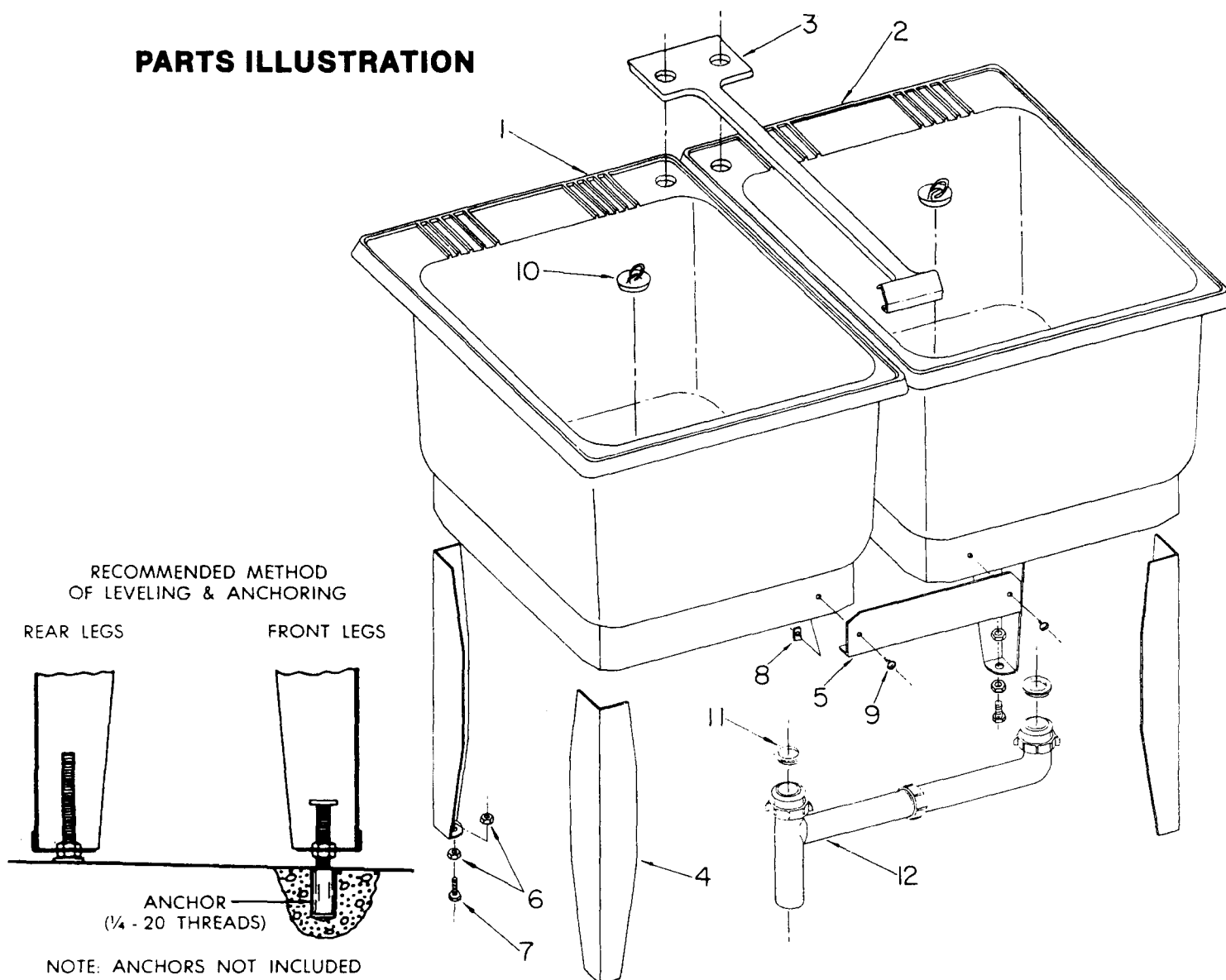
**E.L. MUSTEE & SONS, INC.**

5431 West 164th Street • Cleveland, Ohio 44142

SI-169 (2/93)

# UTILATWIN® LAUNDRY TUB

## PARTS ILLUSTRATION



## PARTS LIST

KEY NO.	PART NUMBERS		DESCRIPTION
	MODEL 22 (22K)	MODEL 24 (24K)	
1	22.101	24.104	Laundry Tub - Left Hand
2	22.102	24.105	Laundry Tub - Right Hand
3	22.402	24.410	Divider Strip - Molded
4	10.204A	10.204A	Leg (4) req'd.
5	22.401	22.401	Brace (2) req'd.
6	91.801	91.801	1/4" - 20 Nut (8) req'd.
7	10.207	10.207	1/4" - 20 x 1 1/2" Leveling Screw (4) req'd.
8	91.805	91.805	#10 Flat Nut (4) req'd.
9	91.803	91.803	#10 x 1/2" Slotted Tapping Screw (4) req'd.
10	23.303	23.303	Stopper - 1 1/2" Dia. (2) req'd.
11	91.702	91.702	Flanged Washer (2) req'd.
12	24.313A	24.313A	Twin Drain Assembly

**E.L. MUSTEE & SONS, INC.**

5431 West 164th Street • Cleveland, Ohio 44142

SI-169 (2/93)