

PARTS FOR MODELS RP2

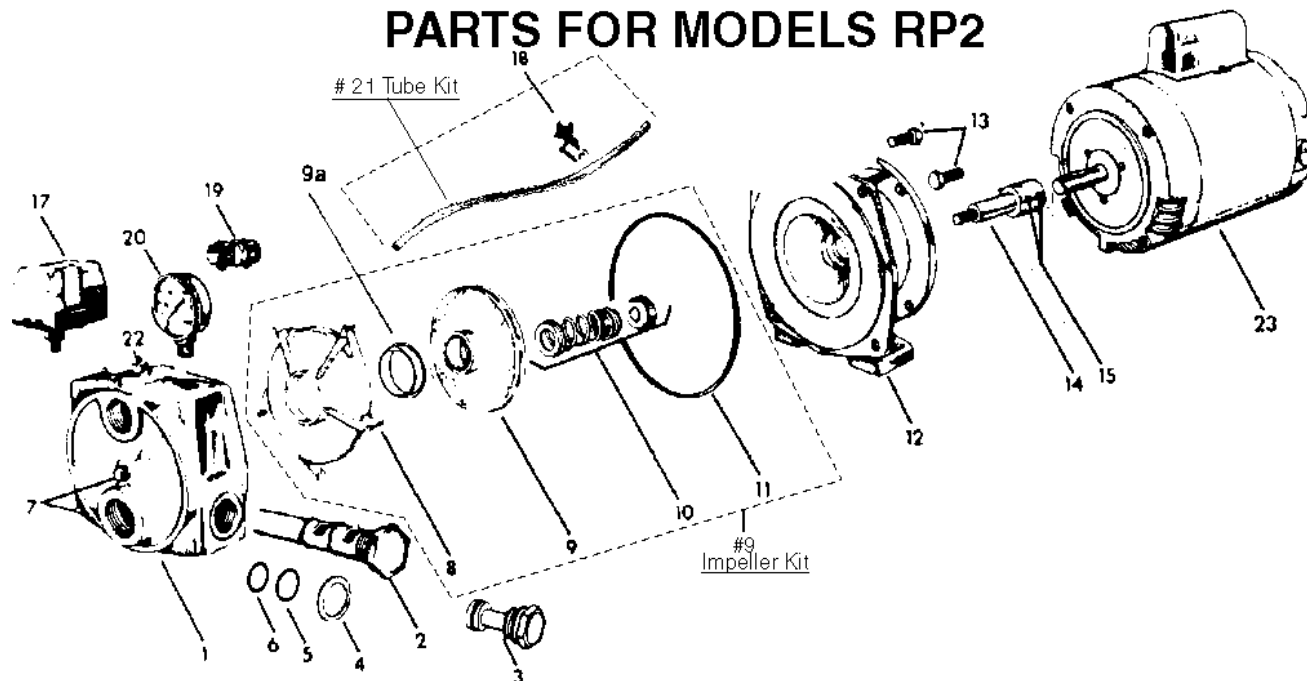


Fig. No.	Old No.	New No.	Description
1	03-0636-09-R		Case Kit w/wear ring #9a and plugs #7
2	18-1247-01-R		Shallow well injector #1023 f/ 5RP2
	18-1248-00-R		Shallow well injector #1034 f/ 7RP2
3	18-1290-07-R		Deep Well Plug assembly
4	47-0120-00-R	24-0123-04	Seal o-ring kit
5	47-0115-07-R	24-0123-04	seal o-ring kit
6	47-0116-06-R	24-0123-04	seal o-ring kit
7	31-0059-11-R	31-0059-11-06PK	Plug 1/4" galv. (available in 6 pack only)
			All Impeller Kits Include: - impeller,diffuser,mech.seal,sq.-ring
			Fig. No. 8,9,9a,10,11.
8	06-0118-03-R	see item #9	Diffuser for 5RP2 (now included with imp. kits)
	06-0119-02-R	see item #9	Diffuser for 7RP2 (now included with imp. kits)
9	05-3074-00-R	24-0121-06	Impeller Kit f/ 5RP2
	05-3075-09-R	24-0122-05	Impeller Kit f/ 7RP2
9a	08-0845-19-R	see item #9	Wear Ring (now included with imp. kits)
10	10-1203-01		Mechanical Seal (Also included with imp. kits)
11	47-0258-53-R	47-0258-53-02PK	Square Ring Kit 6 x 1/8 x 1/8 (2 per kit)
12	02-1101-04-R	new descr.	5RP2 Brkt 4-3/4 Imp Fit #4933 w/ capscrews #13
	02-1102-03-R	new descr.	7RP2 Brkt 5" Imp. Fit #4933 w/capscrews #13
13	14-1292-25-R	14443303K	* Fastener Kit
14	07-21521-05-R001		Shaft Coupling wit set screws 7/16 thrd.
15	14-0002-02-R	14-0002-02-24PK	Set Screw Kit (Kit includes 24 per Pack)
17	9195-7027-R020	69ES1AZ2040	Pressure Switch Set 20-40
18	31-1198-03-R	31-1197-04-K	Tube Kit 1/4 x 14-1/2 Long w/barb
19	23-2647-08-R		Box Spacer
20	9193-4018-R	9193-4018	Pressure Gauge 0 - 100 lbs. "see accessory page"
21	31-1197-04-R014	31-1197-04-K	Tube Kit 1/4 x 14-1/2" long w/barb #18
22	31-0063-07-R		1" Plug (also included with case item #1)
23	Motor		See motor Selection Page.
Kit		24-0123-04	RP2 Convertable Jet "SEAL/O-RING KIT" Includes Fig. No's 4,5,6,10,11.

Owners Manual E-1455

* Fastener Kit #14443303K Includes the following;
8 ea. 3/8-16 X 3/4 PL Hex Capscrew